

# Hiking with a stroller.

➔ Parcel Oberboden - Schwand - Wald

From Oberboden, follow the lightly trafficked road to the Wald parcel. From there, you can enjoy a beautiful view. Return the same way.

**Tip:** You can also start the hike in Schröcken-Heimboden and walk to Oberboden along the sidewalk.

**Start/Finish:** Oberboden

**Parking:** Village center of Schröcken

**Bus stop:** Schröcken Tannbergbrücke

**Duration:** 1 to 1.5 hours

**Elevation gain:** 149 m ↑ 149 m ↓

**Distance:** 2.7 km





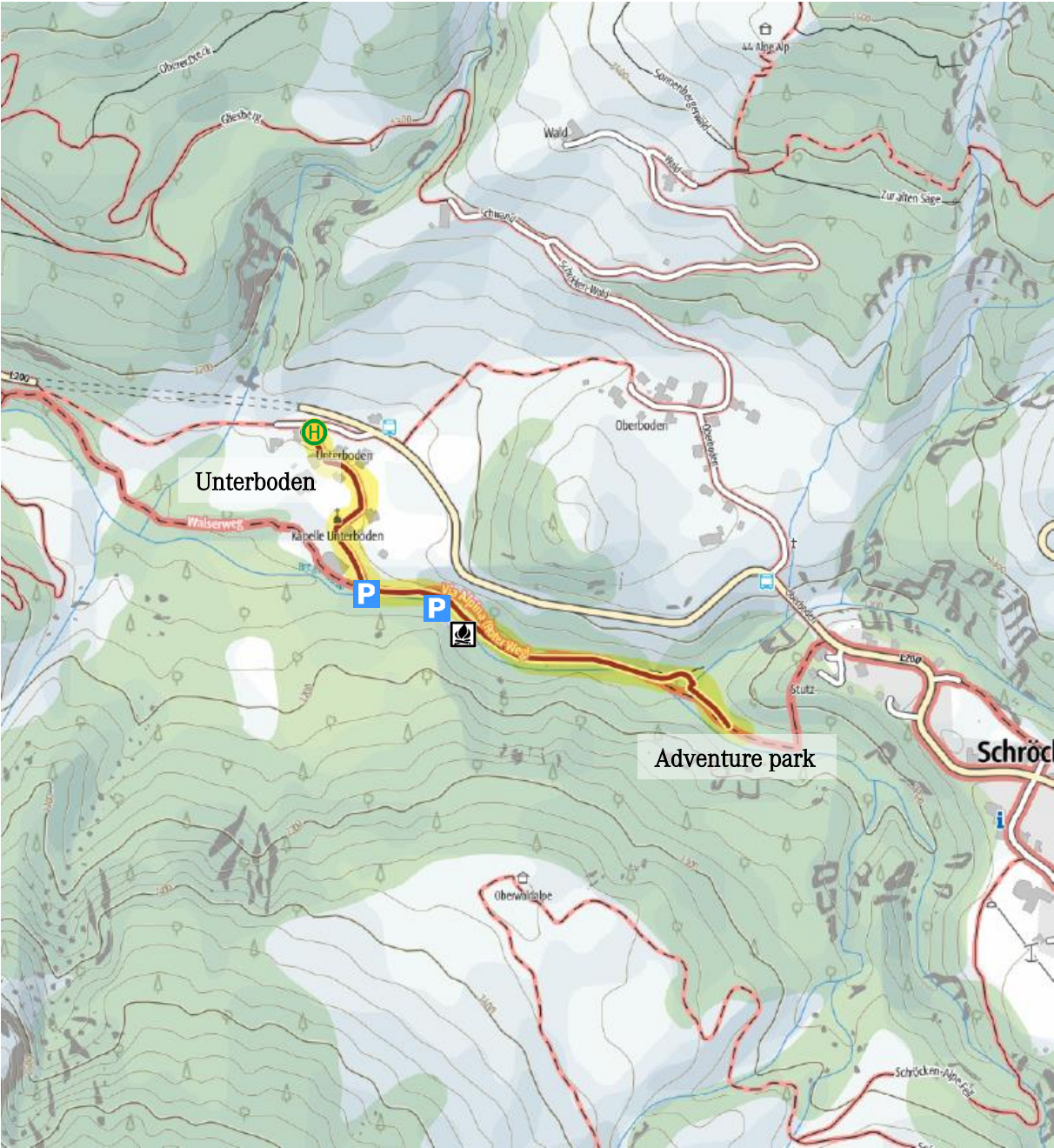
# Hiking with a stroller.

➔ **From Parcel Unterboden to the Adventure Park Schröcken**

The path from Parcel Unterboden follows along the Bregenzerache river past the sulfur spring to the Adventure Park. Often shaded and therefore ideal on hot summer days. The public barbecue area invites you to linger. Return the same way.

**Start/Finish:** Schröcken-Unterboden  
**Parking:** Adventure Park or Football field  
**Bus stop:** Schröcken Unterboden

**Duration:** approx. 30 minutes  
**Elevation Gain:** 24 m ↑ 24 m ↓  
**Distance:** 1.5 km



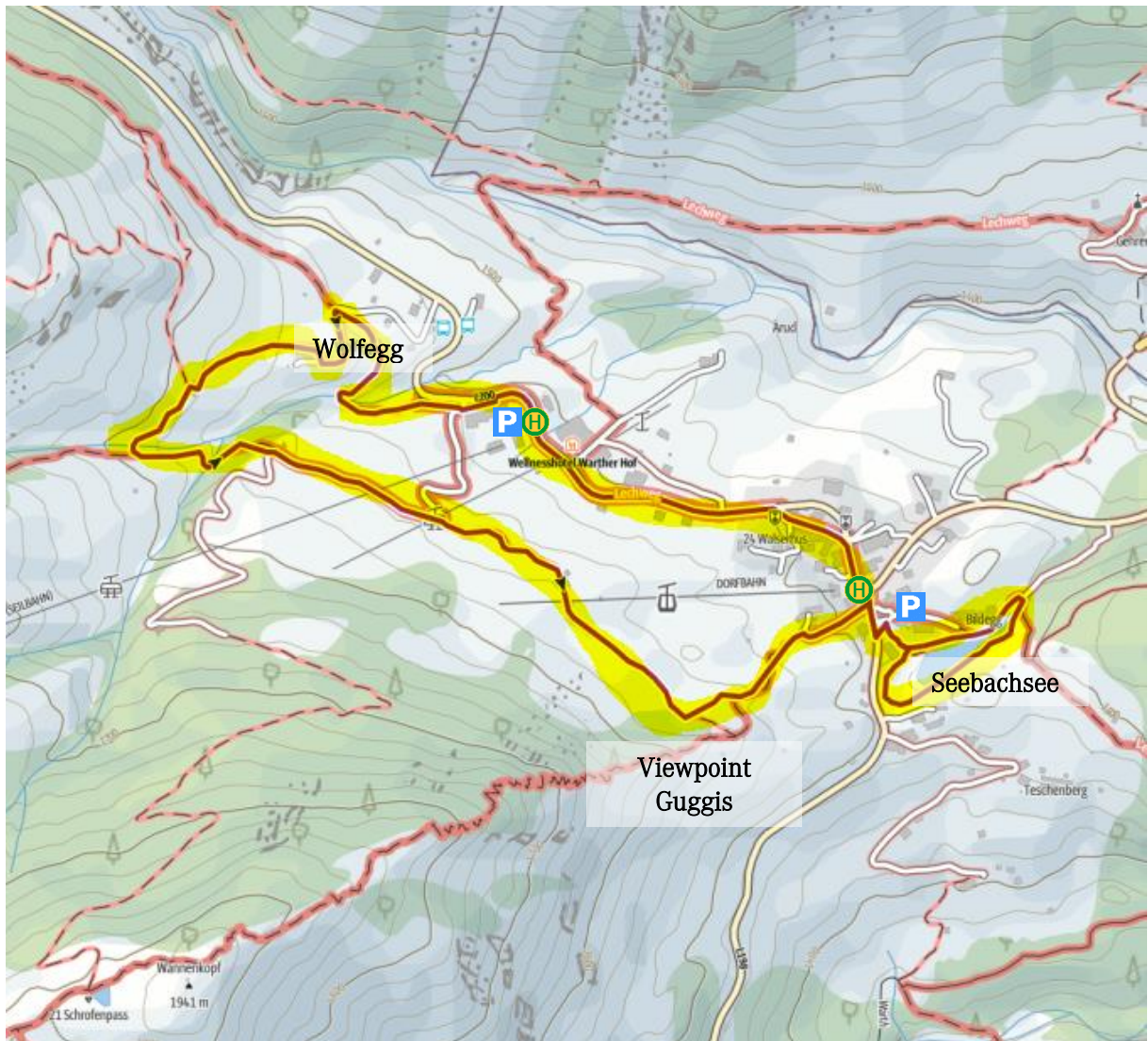
# Hiking with a stroller.

## → Warth Village Circular Trail

From the village center, pass by the church and continue towards the Hotel Steffisalp. To the right of the Hotel Steffisalp, there is an entrance leading upwards, which then merges into a service road. Follow this road uphill for three switchbacks, then turn left. Continue along the path towards the Tourism Office, heading towards Wälder Metzge and Seebachsee. **Tip:** Feed the ducks at Seebachsee.

**Start/Finish:** Warth Village Center  
**Parking:** Village center of Warth  
**Bus stop:** Warth Dorfplatz

**Duration:** 1 to 1.5 hours  
**Elevation Gain:** 110 m ↑ 110 m ↓  
**Distance:** 4.2 km





# Hiking with a stroller.



## → Around the Seebachsee

A leisurely walk around the Seebachsee in Warth. A footbridge with loungers and some benches invite you to relax. **Tip:** Feed the ducks.

**Start/Finish:** Warth Village Center

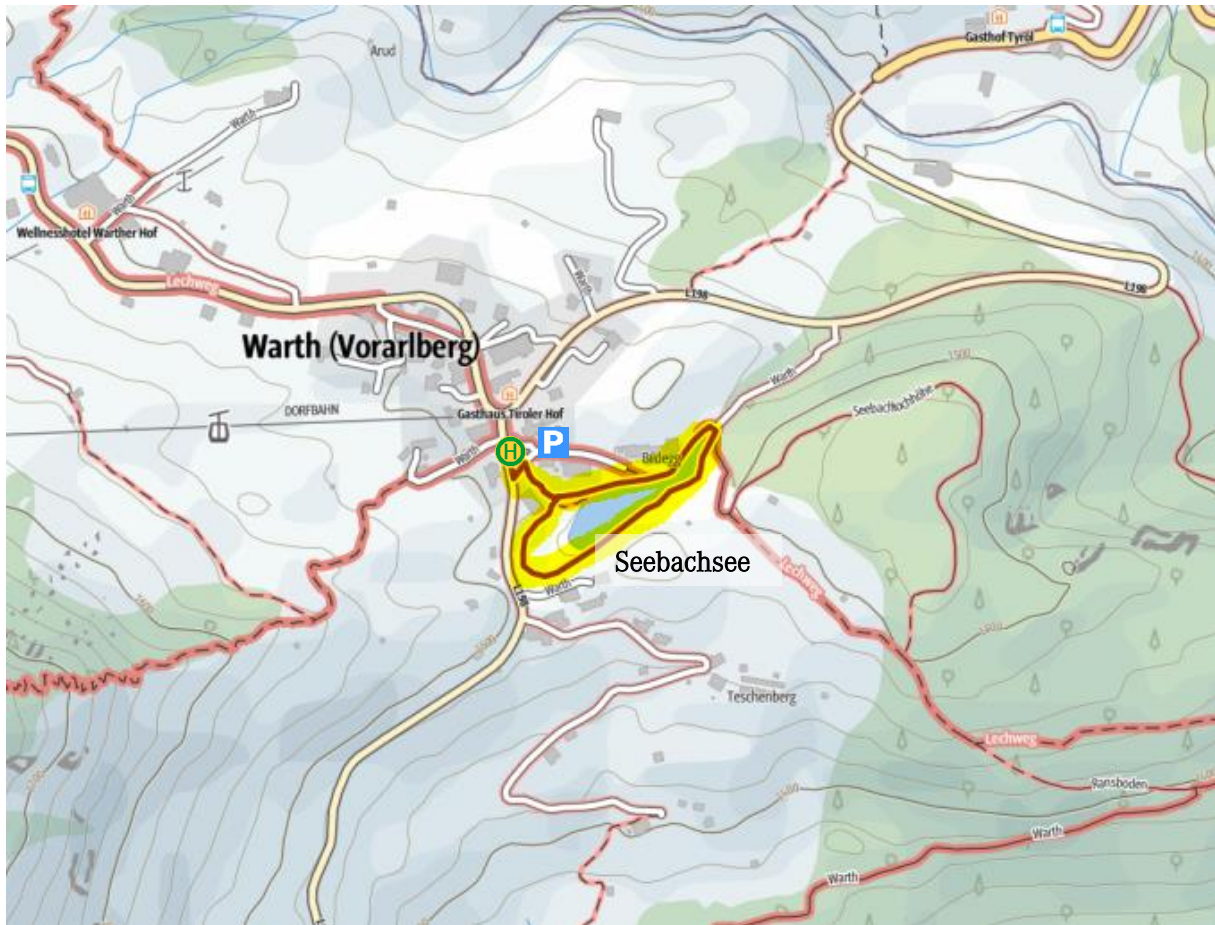
**Parking:** Village center of Warth

**Bus stop:** Warth Dorfplatz

**Duration:** approx. 15 minutes

**Elevation Gain:** 8 m ↑ 8 m ↓

**Distance:** 0.8 km



# Hiking with a stroller.

## ➔ Sunny path from Gehren to Lechleiten

A cozy and sunny hike from the hamlet of Gehren to Lechleiten with a view of Warth.

**ATTENTION:** There are no public parking options in Gehren.

Either follow the road to Gehren or take the bus to Gehren (approximately 1.5 km).

**Start/Finish:** Gehren

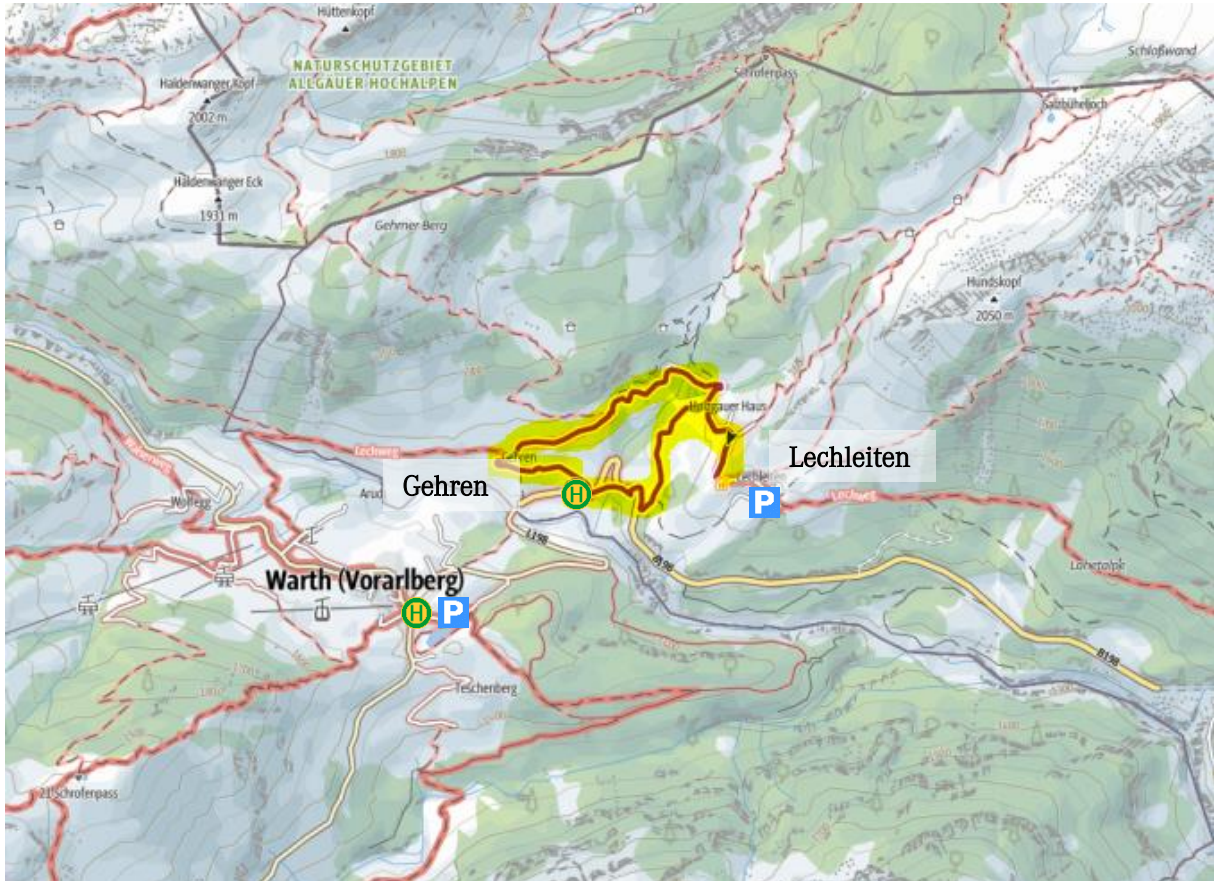
**Parking:** Village center of Warth

**Bus stop:** Steeg Gehren

**Duration:** approx. 1 hour

**Elevation Gain:** 145 m ↑ 145 m ↓

**Distance:** 3.4 km





# Hiking with a stroller.

## ➔ From Kalbelesee to Körbersee (and further to Schröcken)

A light and pleasant hike from Kalbelesee at Hochtannbergpass to Körbersee. Return the same way or continue downhill via the old road to Schröcken.

**Start:** Hochtannbergpass

**Parking:** Salober parking lot

**Bus stop:** Hochkrumbach Salober

**Duration:** to Körbersee 1 h, to Schröcken 2 h

**Elevation Gain:** Körbersee & back 187 m ↑ 187 m ↓

to Schröcken 100 m ↑ 506 m ↓

**Distance:** to Körbersee & back 5.5 km

to Schröcken 6.7 km





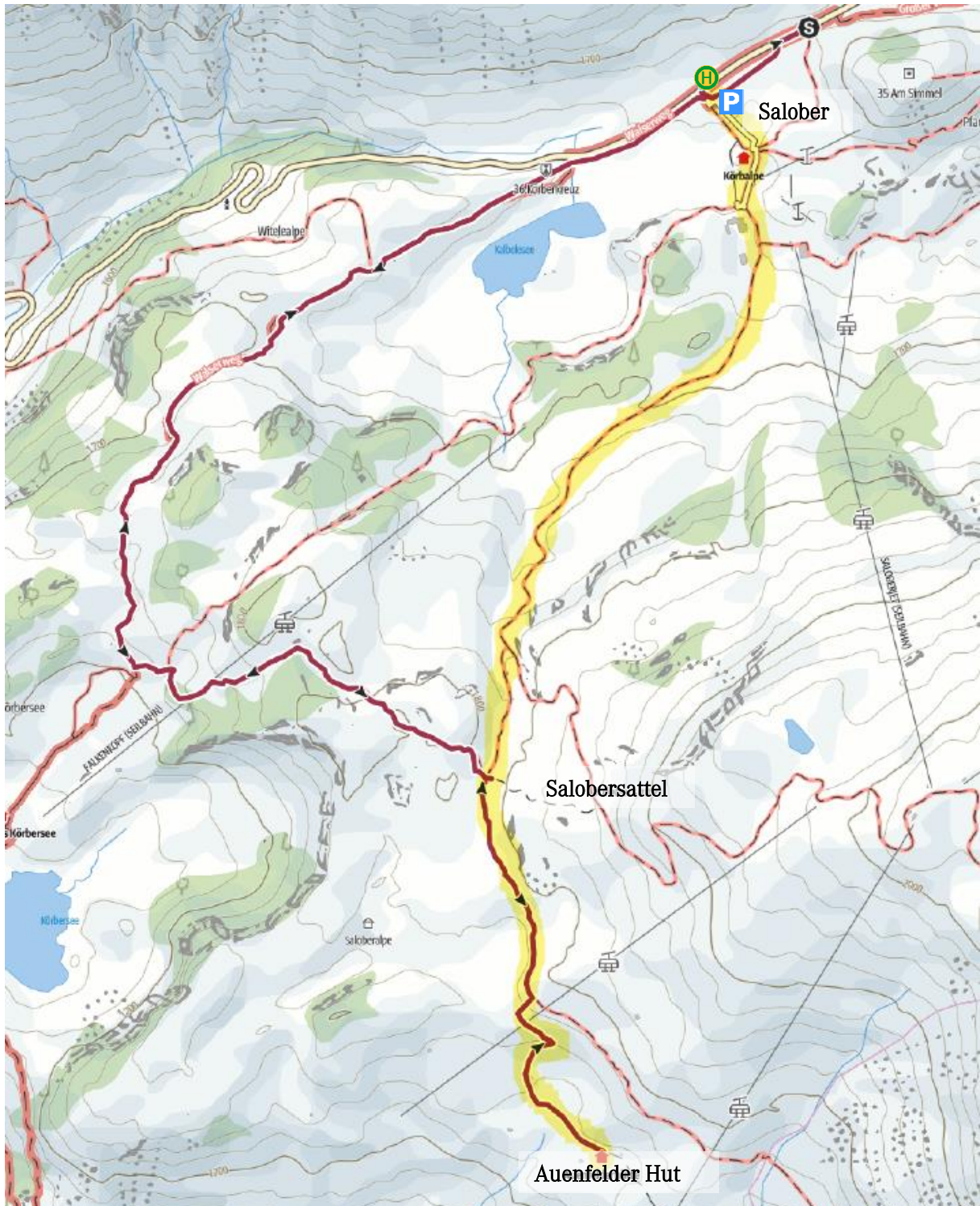
# Hiking with a stroller.

## ➔ Hike to Auenfelder Hut

Cross the Salober parking lot at Hochtannbergpass and take the path towards Saloberkopf/Salobersattel. Before ascending to Salobersattel, turn right and follow the signs to the Auenfelder Hut. Return the same way.

**Start/ Finish:** Hochtannbergpass  
**Parking:** Salober parking lot  
**Bus stop:** Hochkrumbach Salober

**Duration:** 2.5 to 3 hours  
**Elevation gain:** 310 m ↑ 310 m ↓  
**Distance:** 8.4 km





# Hiking with a stroller.



## ➔ Hike to the Simmel Chapel with World Peace Cross

From Hotel Jägeralpe, take the hiking trail towards Salober and continue to the World Peace Cross at Simmel. Return the same way.

**Start/Finish:** Hochkrumbach Hotel Jägeralpe

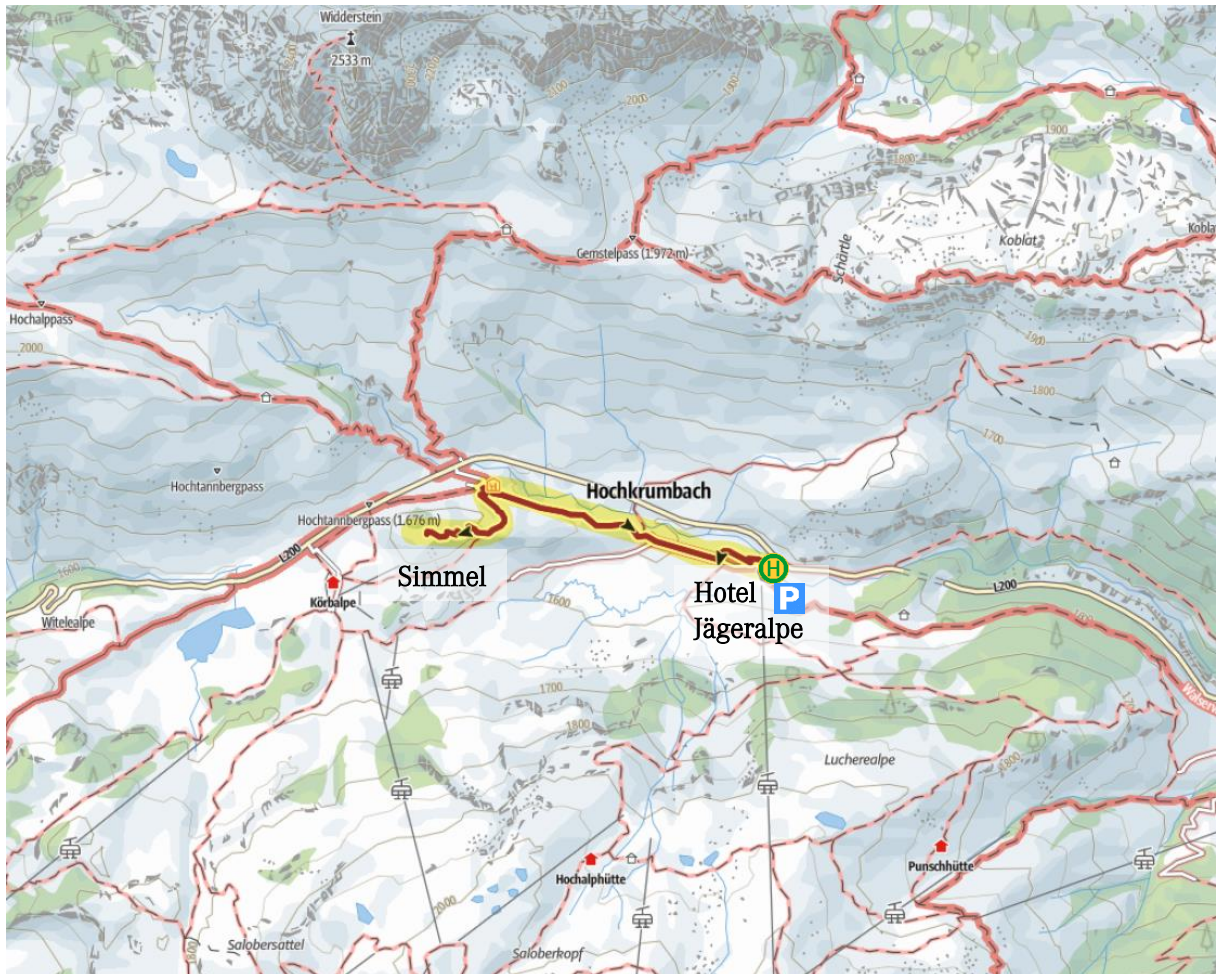
**Parking:** Jägeralpe parking lot

**Bus stop:** Hochkrumbach Jägeralpe

**Duration:** approx. 1.5 hours

**Elevation gain:** 168 m ↑ 168 m ↓

**Distance:** 3.5 km





# Hiking with a stroller.



## ➔ From Lech through the picturesque Auenfeld to Schröcken

Take the bus to Lech (optionally take the Oberlech cable car or the blue local bus from Lech to Oberlech). Cross the Auenfeldsattel to Alpe Batzen and pass by the Alpine Museum on the way to Schröcken.

**ATTENTION:** Parts of the path may be rough for strollers!

**Start:** Oberlech

**Parking:** Anger parking garage Lech

**Bus stop:** Oberlech Junction Burgplateau

**Duration:** 3 hours

**Elevation gain:** 148 m ↑ 528 m ↓

**Distance:** 9 km





# Hiking with a stroller.

➔ From Lech through the Auenfeld to Auenfelder Hut and further to Hochtannbergpass

Take the bus to Lech (optionally take the Oberlech cable car or the blue local bus from Lech to Oberlech). Continue through the picturesque Auenfeld to the Auenfelder Hut and finally to the Hochtannbergpass.

**ATTENTION:** Parts of the path may be rough for strollers!

**Start:** Oberlech

**Parking:** Anger parking garage Lech

**Bus stop:** Oberlech Junction Burgplateau

**Duration:** 3 to 3.5 hours

**Elevation gain:** 396 m ↑ 346 m ↓

**Distance:** 10 km

